

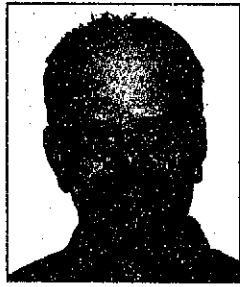
Area Knights aid in hurricane relief effort

Our Lady of Fatima Council which takes in Knights from the communities of Shoal Lake, Oakburn and Rossburn, have pledged a financial donation of \$130 to the largest disaster relief effort in the history of the Knights of Columbus.

Back in September, the Order pledged a minimum of \$2.5 million in financial assistance to help piece together lives of those who were affected by Hurricane Katrina.

Of the money, \$250,000 was distributed to Catholic charities in affected areas, and \$1.25 million will be used in the immediate future to assist those displaced and left indefinitely homeless. An additional \$1 million will be set aside and used to rebuild the estimated 130 Catholic schools destroyed or seriously damaged in the storm and its aftermath.

Back in 2001, Knights raised and disbursed more than \$1 million in the weeks immediately after the 9/11 terrorist attacks, and this time around, in the aftermath of Hurricane Katrina, Knights rushed into action with an outpouring of charitable endeavors and hands-on help for victims of the worst natu-



Darrell Nesbitt

Shoal Lake

ral disaster in U.S. history.

All donations to Knights of Columbus charities are tax deductible. Should you wish to aid in this quest or others supported by the Order through a monetary donation, contact John Muzykowski of Shoal Lake, a local Knight who considers himself lucky to be able to help.

Nadine Gapka of Oakburn became the new Chief Administrative Officer (CAO) of the Rural Municipality of Shoal Lake on Nov. 14, replacing Marianne Choptuik, whose resignation from the position was effective Oct. 31.

Donna Bartram of Shoal Lake, who is the permanent part-time assistant, served as

the Acting CAO from Nov. 1-14, and was aided by casual assistant Joan Derhak, also of Oakburn.

Nadine and her husband Darwin have a family of four - two girls, Brittany and Jaylyn, and twin boys, Braiden and Brendon.

Shoal Lake Town Councillor Paulette Koroscil reports that plans for the printing of a Centennial History Book in 2009 have been initiated, but a decision must be made to either reprint additional copies of the first edition of Ripples on the Lake printed in 1984 plus a supplement for the past 25 years, or simply incorporate portions of the first book into a second edition.

Your thoughts can be left at either the Town or R.M.

Office, along with your name should you be interested in becoming a committee member.

If you are interested in receiving a Christmas Cheer hamper or know of someone who would benefit from receiving one, contact Alfred Reschke (759-2544) or Dixie Stewart (759-3275). Collections will take place on Dec. 3 from 9:30 a.m. to noon at Bigway Foods and the Strathclair Co-op.

I had a call this week from Myrtle Lane of Birtle, who was attempting to track down information that will aid in the 30th Anniversary of the Birtle District Community Centre (Arena).

If you were a player or coach of a specific team dur-

ing the inaugural year, she would like to hear from you. Give her a call at 842-3606.

Aleaha More, Miss Manitoba High School Rodeo Association 2000, won the title of Miss Rodeo Canada 2006 during the Nov. 11 evening performance of the Canadian Finals Rodeo in Edmonton.

As the first lady of Cana-

dian Professional Rodeo, More, who earned the right to compete as 2004 Medicine Hat Stampede Princess, will make appearances throughout western Canada and into the United States including the National Finals Rodeo in Las Vegas, NV.

The 2001 Virden graduate now resides in the Alberta city of Medicine Hat.

SHOAL LAKE BIODIESEL PROJECT

Public Meeting

Tuesday, Nov. 29

1:30 p.m.

Shoal Lake Community Hall

Presentations on
Provincial Biodiesel Program
CED Tax Credit Program
Shoal Lake Project Business Plan

Hosted by the
Shoal Lake Regional CDC
Wheat Belt CFDC

Call Teri at (204) 759-3343 for further information

2006 SUBSCRIPTION renewal contest

NOV. 14 - EARLY BIRD WINNER

Karen Stadnyk

Shoal Lake, MB

Grand Prize Draw Jan. 13 - Renew Now To Enter!

HUGE CASH SAVINGS!



2002 Ford Focus LX

\$7,995 or **\$89.00*** bi-weekly



2002 Chrysler Intrepid

\$10,995 or **\$119.99*** bi-weekly



2003 Chevrolet Venture Ext.

\$13,585 or **\$139.00*** bi-weekly



2002 Dodge Dakota 4x4

\$16,995 or **\$179.99*** bi-weekly

CARS

| | |
|---------------------------------|----------|
| 2003 Nissan Sentra GXE..... | \$10,985 |
| 2003 Chevrolet Impala..... | \$10,995 |
| 2003 Chevrolet Malibu..... | \$10,995 |
| 2002 Chrysler Intrepid..... | \$10,995 |
| 2002 Hyundai Sonata..... | \$10,995 |
| 2001 Volkswagon Jetta GLS..... | SOLD |
| 2001 Pontiac Grand AM..... | SOLD |
| 2001 Hyundai Tiburon SE..... | SOLD |
| 2001 Pontiac Sunfire, 4 dr..... | \$8,995 |
| 1999 Pontiac Grand Prix..... | \$8,995 |

TRUCKS

| | |
|---------------------------------|----------|
| 2001 GMC Jimmy SLT, loaded..... | \$16,495 |
| 1997 Ford Expedition XLT..... | \$7,995 |

VANS

| | |
|-------------------------------|----------|
| 2005 Ford Freestar Sport..... | \$20,495 |
| 1999 Plymouth Voyager..... | SOLD |
| 1998 Plymouth Voyager..... | \$7,995 |

View our entire inventory at
www.cardaleautosales.com

*Pictures, Weekly Specials
and Much More!!*

View our entire inventory
from every angle...
4 photos for each vehicle!

* CAC, plus fees & taxes



Cardale Auto Sales

"We put the Car in Cardale!"

Ph. 566-2499 Cardale, MB

www.cardaleautosales.com email: cardaleautosales@inetlink.ca

Store Hours: Monday - Saturday 9 AM - 6 PM
(After Hour Appointments Are Welcome!)

Permit #1377

Shoal Lake Chamber of Commerce
Strathclair Credit Union Ltd.

presents

Christmas Shop at Home Program

BONUS... for every \$50 spent at participating merchants (until Dec. 27) you will have your name entered in a draw for \$500 in Chamber Bucks.

• **EARLY ELF DRAW at Santa Day - Dec. 9**

Christmas Cash Program

with **INTEREST-FREE LOANS** from Strathclair Credit Union Ltd.

\$500 to \$2,000 @ 0% Interest
for 9 months

Available Nov. 21 to Dec. 24 for your Christmas Shopping

Contact Strathclair Credit Union or any participating Chamber of Commerce Member for your Christmas Cash application

Offer good at participating merchants only.



**Shoal Lake
Chamber of Commerce**